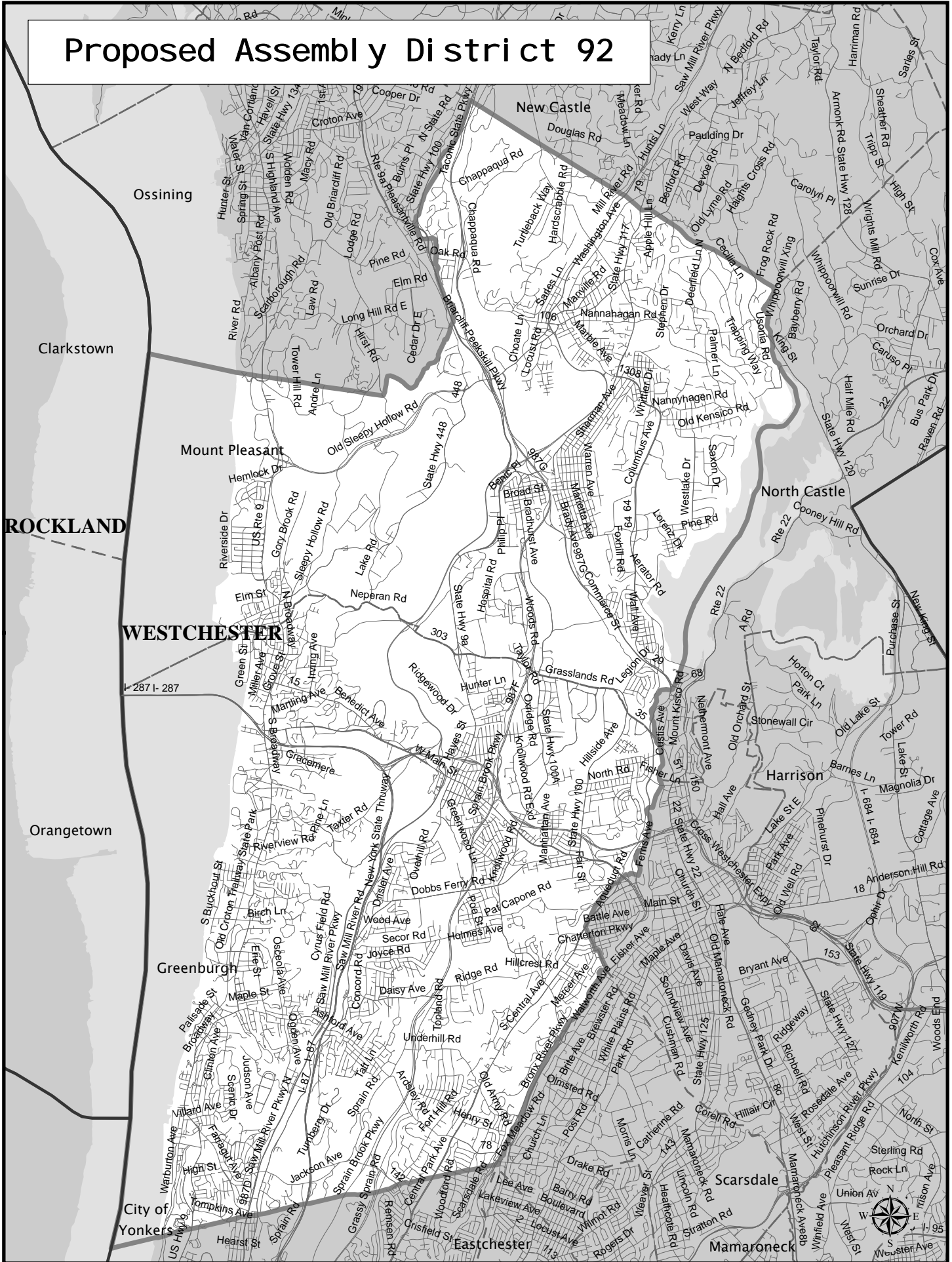


Proposed Assembly District 92



Assembly District 92

Adjusted Total Population : 132,193
Deviation : 3,104
Deviation Percentage : 2.40

	NH White	NH Black	Hispanic	NH Asian	NH Amlnd	NH Hwn	NH Multi	NH Other	Unknown
Total	85,635	12,483	20,241	11,248	87	34	2,044	421	0
% of Total	64.78	9.44	15.31	8.51	0.07	0.03	1.55	0.32	0.00
Total 18+	67,334	9,624	14,236	8,393	63	27	1,006	229	0
% of 18+	66.73	9.54	14.11	8.32	0.06	0.03	1.00	0.23	0.00

Department Of Justice									
	NH White	NH Black	Hispanic	NH Asian	NH Amlnd	NH Hwn	NH Multi	NH Other	Unknown
Total	85,635	12,905	20,241	12,090	183	54	582	503	0
% of Total	64.78	9.76	15.31	9.15	0.14	0.04	0.44	0.38	0.00
Total 18+	67,334	9,810	14,236	8,666	131	42	410	283	0
% of 18+	66.73	9.72	14.11	8.59	0.13	0.04	0.41	0.28	0.00

NOTE: For a description of field names and Department of Justice definitions, please refer to the documentation above the district listing.